



Building Major Scales - SHARPS



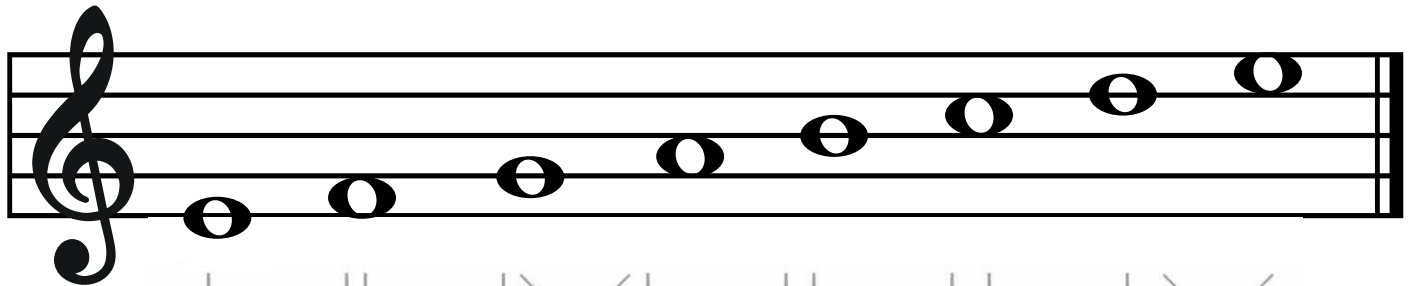
Using the C Major scale as an example, apply the structure of Whole Steps [WS] and Half Steps [HS] and **ADD SHARPS** where needed to build the remaining scales. *Play each scale to check your work!*

WS WS HS WS WS WS HS

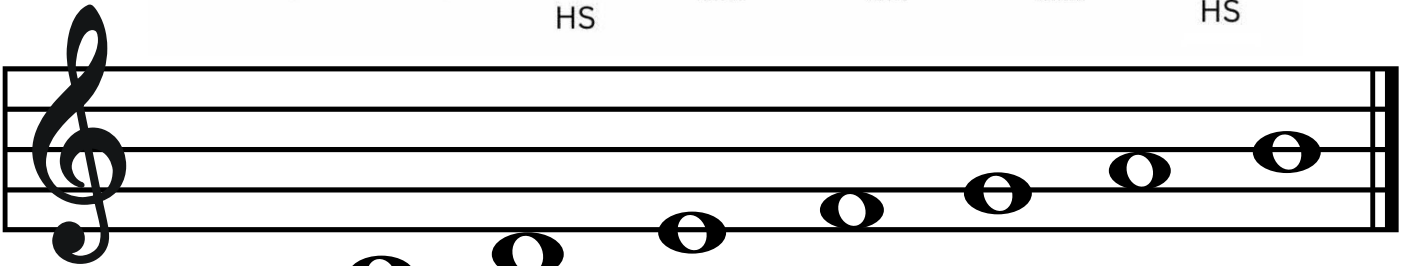
WS WS HS WS WS WS HS

WS WS HS WS WS WS HS

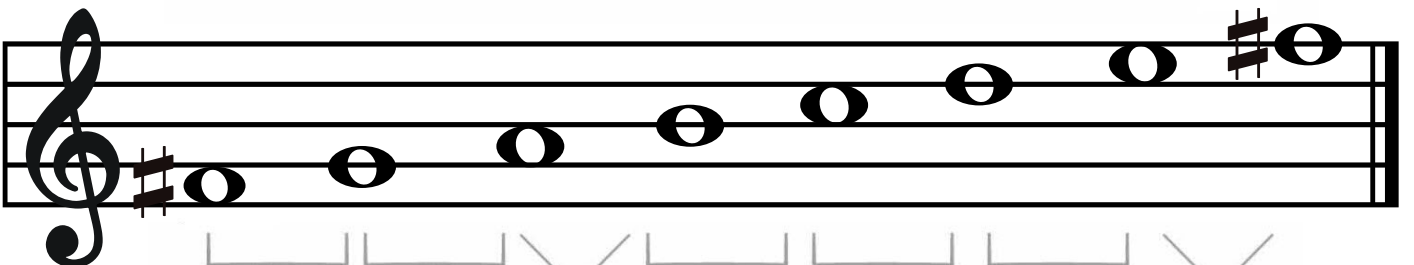
WS WS HS WS WS WS HS



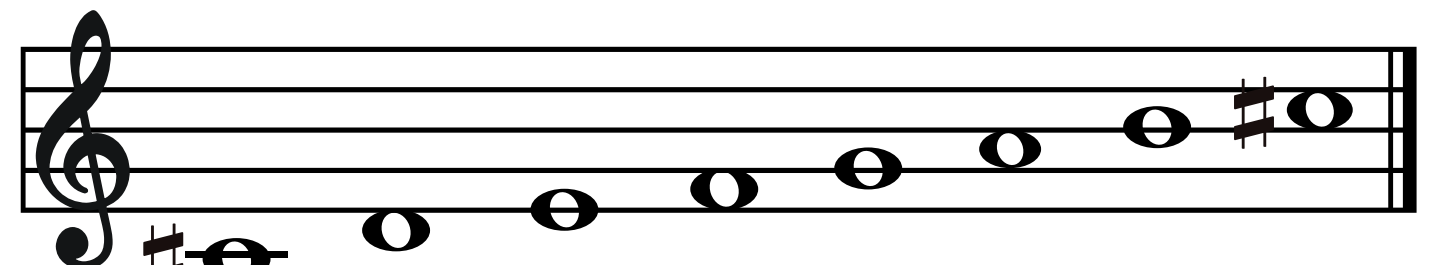
WS WS HS WS WS WS HS



WS WS HS WS WS WS HS



WS WS HS WS WS WS HS



WS WS HS WS WS WS HS