


Time Signatures & Rhythm

TIME SIGNATURES

The **TIME SIGNATURE** is the 2 numbers you see at the beginning of a piece.

The **TOP NUMBER** tells how many **BEATS** are in each measure.



The **BOTTOM NUMBER** tells what kind of **NOTE** gets one beat.

When the number 4 is on the bottom, the **QUARTER NOTE**  gets one beat.




Here are some examples of time signatures with a 4 on the bottom:







2 means **2 beats** in each measure

4 means the **quarter note**  gets 1 beat
The half note  gets 2 beats


3 means **3 beats** in each measure

4 means the **quarter note**  gets 1 beat
The half note  gets 2 beats
The dotted half note  gets 3 beats

4 means **4 beats** in each measure

4 means the **quarter note**  gets 1 beat
The half note  gets 2 beats
The dotted half note  gets 3 beats
The whole note  gets 4 beats



4
The **4** time signature is very common. That is why you will often see this symbol used instead:  It means "common time".

REST SIGNS



Rest signs are used for silence. Each note has a rest sign with the same value.

Quarter Note



Half Note



Whole Note



Eighth Note



Quarter Rest



Half Rest



Whole Rest

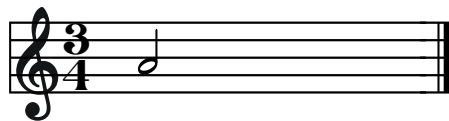
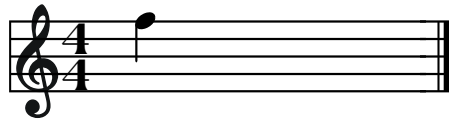
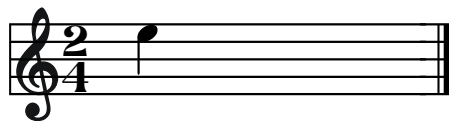


Eighth Rest

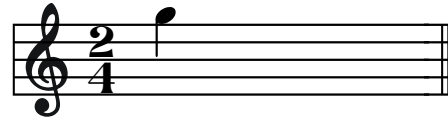
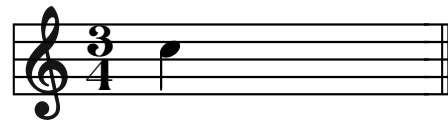
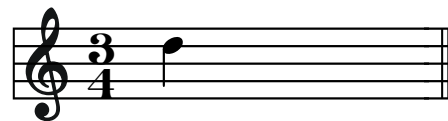
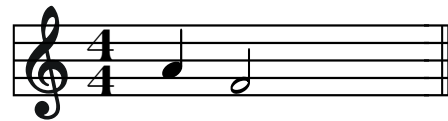


Time Signatures & Rhythm

Add ONE NOTE to the following examples to complete the measure



Add ONE REST to the following examples to complete the measure



Add the correct TOP NUMBER to the time signature of the following examples.

